

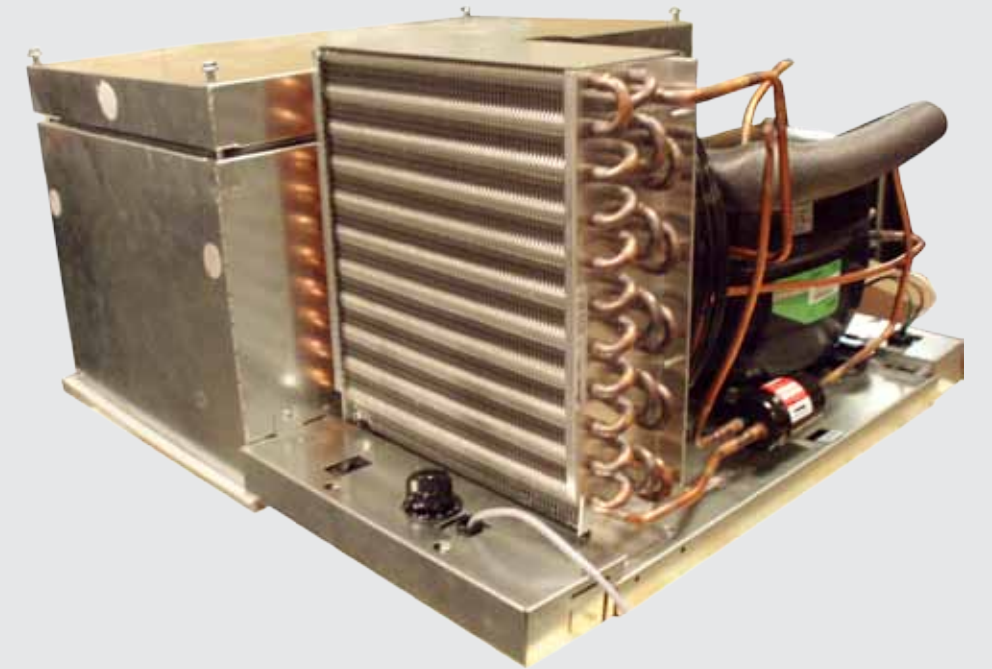
6000XL Reach-In Refrigeration

The 6000XL series reach-in refrigeration is specifically designed to serve the commercial foodservice market. Well thought out features like **efficient and space saving top mount refrigeration systems, stay open doors that make loading and unloading easy, very cleanable seamless interior liners and the capability to accommodate 18"x26" sheet pans** make the 6000XL series a perfect fit for enhancing productivity in your foodservice operation.

- Top Mount, High Performance Refrigeration System
- Delrite® One-Piece Interior Liner
- Sized to Fit Easily Through Doorways
- Easy Shelf Adjustment
- Oversized Magnetic Gasket
- Environmentally Friendly High Density Polyurethane Foam Insulation
- Self Closing Edge-mount Hinges
- Casters Mounted From the Factory
- Large Internal Storage Capacity
- Quick Grip, Long Length Recessed Door Handles
- Tough ABS Door Liner with Gasket Protection
- Stainless Steel Exterior Front
- Heavy Duty Lock System
- Deep Interiors
- Peace of Mind Warranty

Energy Efficient/Performance Capable Refrigeration System

All refrigeration systems are not created equal.



Reliable, solid state electronic control

Out performs conventional electromechanical controls with more precise performance and longer life.

Adaptive defrost

Our refrigeration systems on both refrigerators and freezers are designed to defrost on demand, assuring continuous performance in any work environment. Hot humid kitchens, heavy use, lots of door openings and closings? No problem. Adaptive defrost senses conditions and assures a clean, ice free evaporator all the time. And adaptive defrost lowers energy usage, saving you money.

Wide operating range

Our refrigeration systems allow for 27°F to 40°F operation on a refrigerator without any special modifications. They have the range to meet the temperature needs of your diverse menu.

Efficient three pass design evaporator coil

Air moves through the coil more efficiently, creating better heat transfer, resulting in improved temperature performance and faster recovery.

Expansion valve metering

All models are standard with expansion valves. This provides variable refrigerant flow into the evaporator for efficient operation, exceptional temperature performance and fast recovery.

Evaporator fan/improved airflow

Better energy efficiency with one fan motor rather than two. Fewer parts to wear out. Improved airflow allows for better temperature maintenance and fast recovery.

Large condenser coil

More condensing surface allows for lower refrigerant pressures which result in better energy efficiency. Larger coil surface also doesn't clog as quickly from dirt and grease, requires less cleaning, provides more efficient operation. Also optional condenser filter screen is available.

Control placement

Controls are mounted integral to system base and are easy to access. Energy saver door heater on/off switch placed next to the temperature mount. Wiring is concealed within the base of the system. The condenser is easy to get at for cleaning.

Large Capacity Condensate removal

Condensate removal extends all the way under the system base and has the capacity to handle condensate in humid environments. The plastic pan will not corrode. Use energy efficient hot gas refrigerant line to evaporate condensate.

Blue Led digital standard thermometer with alarms

Easy to read thermometer comes standard with visual high/low temp alarm.

